

## LED SHELF SERIES



Make your goods  
shelves valuable

- Smart solution for goods shelves

### Application

- Shopping mall & Supermarket
- Retail & Stores
- VEM & Refrigerated cabinet



### Specification List

Product Name	LS-1.2	LS-1.5	LS-1.8
Pixel Pitch (mm)	1.25	1.5	1.875
Pixel Density (dot/m <sup>2</sup> )	640,000	444,444	284,444
Module Size (mm)	240*60	240*60	240*60
Panel Size(mm)	720*60*30		
Panel Resolution (dot)	576*48	480*40	384*32
Panel Material	Aluminum		
Panel Weight (kg/pcs)	1.1		
Brightness (cd/m <sup>2</sup> )	600		
Horizontal & Vertical Viewing Angle (Deg)	140/110	140/110	140/110
Contrast Ratio	5000:1		
Max.& Avg.Power Consumption (W/m <sup>2</sup> )	680/225	680/225	540/180
Refresh Rate (Hz)	3840		
Maintenance Way	Front or Rear		
Installation Way	Rear		
IP Rate	IP20		

Certifications CE, RoHS, EMC, CCC

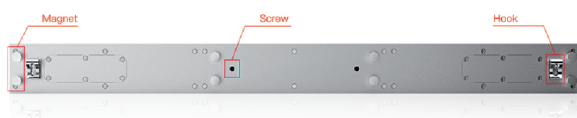
Note: \* Specifications are slightly different according to different configurations.  
\* All rights reserved to SHISAI.

---

## Internal Cabling

---

- Inner connected data & power cables
- Space-saving
- Neat Cabling




---

## Multi Installation Methods

---

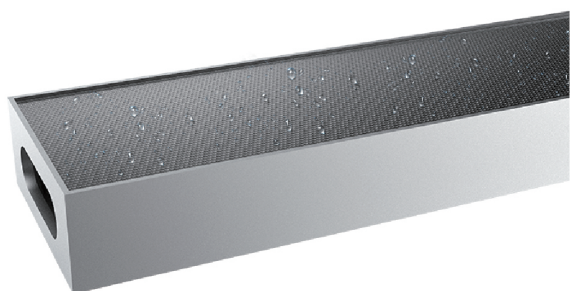
- Hook, screw and magnet available for matching up with any kinds of shelf or rack

---

## Cascade Connection

---

- Adapt to longer shelf




---

## Optional GOB Version

---

- Anticollision, dust prevention and moisture-proof

---

## More Stable

---

- Built-in self-protected power module for the case of overvoltage & voltage drop  
(Comform to the requirement of CE certification)

