

Rock N'Roll

- High-end solution for events

Application

- Events & Shows
- TV Studio & Broadcasting
- Indoor & Outdoor High definition Signage



HIGH
DEFINITION



MUTE



LOW POWER



ROBUSTNESS



HIGH
CONTRAST



EASY
MAINTENANCE

Specification List

Product Name	Ember-1.5	Ember-1.9	Ember-2.6	Ember-2.9	Ember-3.9
Pixel Pitch (mm)	1.5625	1.953	2.604	2.976	3.906
LED Type	SMD1010	SMD1010	SMD1515	SMD2020	SMD2020
Pixel Density (dot/㎡)	409,600	262,144	147,456	112,896	65,536
Module Size(mm)	250*250				
Panel Size(mm)	500*500*75				
Panel Resolution(dot)	320*320	256*256	192*192	168*168	128*128
Panel Material	Die Cast Aluminum				
Weight(kg/panel)	8	8	8	8	8
Brightness(cd/㎡)	600	800	1000	1000	1200
H&V Viewing Angle	160/140				
Contrast Ratio	4000:1				
Max&Avg Power(W/㎡)	680/227	680/227	640/220	640/220	640/220
Refresh Rate (Hz)	3840				
Maintenance	Front & Rear				
Installation	Front & Rear				
IP Rate	Indoor use only				
Certification	CE, EMC , CCC, ETL				

Note: * Specifications are slightly different according to different configurations.
* All rights reserved to SHISAI.

Rock N'Roll

- High-end solution for events

Application

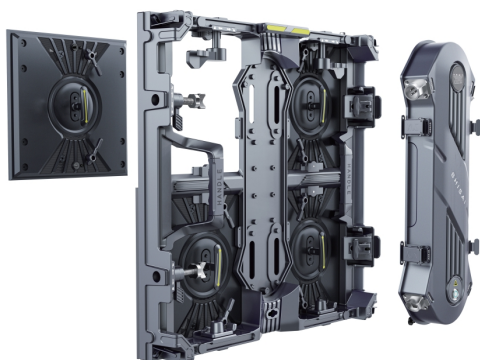
- Events & Shows
- TV Studio & Broadcasting
- Indoor & Outdoor High definition Signage



Specification List

Product Name	Ember Pro-2.6	Ember Pro-2.9	Ember Pro-3.9	Ember Pro-4.8
Pixel Pitch (mm)	2.604	2.976	3.906	4.81
LED Type	SMD1415	SMD1415	SMD1921	SMD2727
Pixel Density (dot/㎡)	147,456	112,896	65,536	43,264
Module Size(mm)	250*250			
Panel Size(mm)	500*500*75			
Panel Resolution(dot)	192*192	168*168	128*128	104*104
Panel Material	Die Cast Aluminum			
Weight(kg/panel)	8.5	8.5	8.5	8.5
Brightness(cd/㎡)	4000	4000	4000	5000
H&V Viewing Angle	140/110			
Contrast Ratio	4000:1			
Max&Avg Power(W/㎡)	680/227	650/220	650/220	650/220
Refresh Rate (Hz)	3840			
Maintenance	Front & Rear			
Installation	Front & Rear			
IP Rate	IP65/IP65			
Certification	CE, EMC , CCC, ETL			

Note: * Specifications are slightly different according to different configurations.
* All rights reserved to SHISAI.

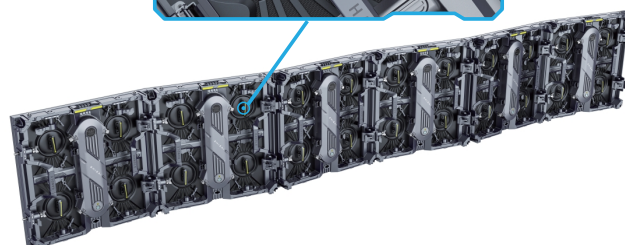
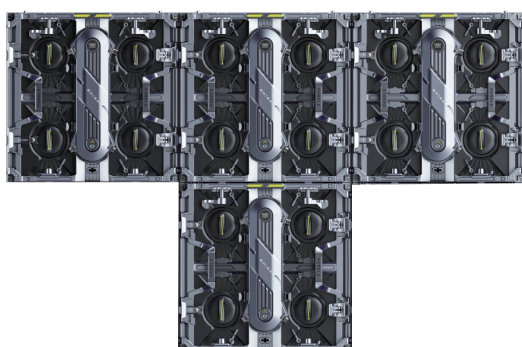


Convenience & Versatility

- Universal panel design for indoor & outdoor
- Fully front and rear access with magnetic style
- Fully front and rear installation

Multi-curvable lock system

- $\pm 2.5^\circ$ $\pm 5^\circ$ $\pm 7.5^\circ$ available, more options for concave, convex and wave shape.

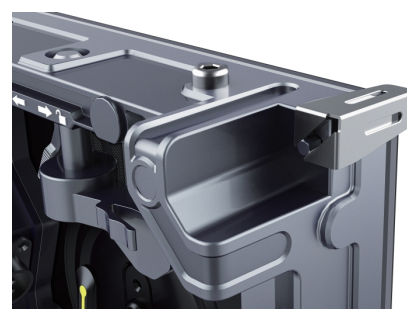
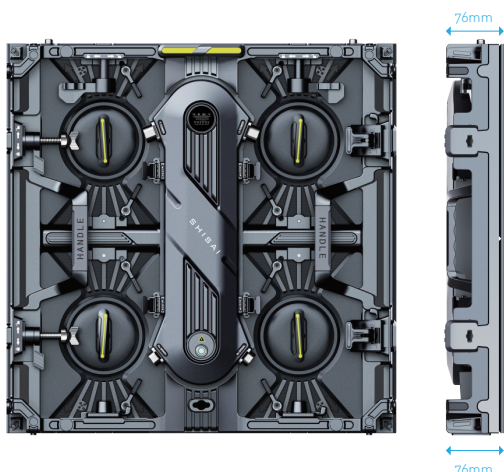


Pre-fix locker system

- The panels up and down could be fixed together before locked and no need to lift it anymore during hanging installation, that makes the panel installation real “one-person-job”

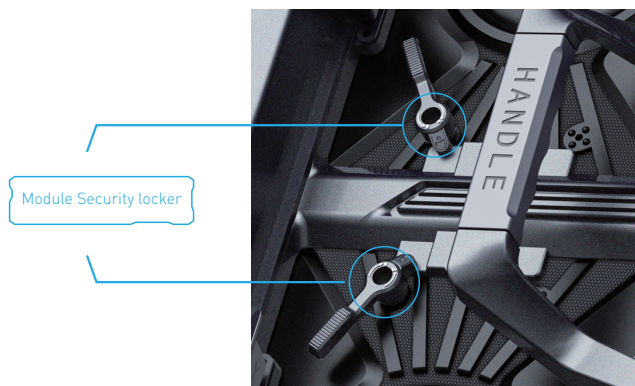
Corner and edge guard

- The spring leaf and bottom bulge protect the vulnerable corners and edges during transportation and standing.



Ultra slim and light weight

- 8-8.5kg/panel
- 76mm thickness



Module Security locker

- Prevent modules from falling off or loosening during transportation, and offer more security if front access is not required.

Strengthened panel frame

- Much less distortion and strength weakened with optimized design for the durability of panel.



Optional right angle

- The panel is able to achieve 45° joint for right angle shape or rectangle installation.

Power redundancy system

- The space for power backup has been reserved

